

MASTER
CONICAL ENGINEERING

F10 Master Conic OD

GRINDING TO THE NEXT LEVEL

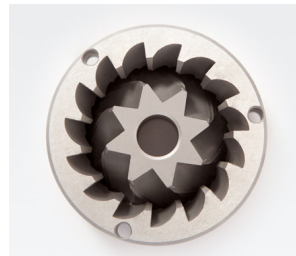
MOTOR 950 W
CONICAL BURRS Ø 68 MM

KEY SPECIFICATIONS

Motor output	950	W
Revolutions per minute	340	rpm
Ø Burrs	Conical 68	mm
Espresso point production	17	Kg/h
Time x dosis Espresso (7gr)	1.6	s
Hopper capacity	1.9	Kg
Height x width x depth	750 x 215 x 400	mm
Net weight	20.50	Kg



DYN VERSION



KEY FEATURES

- ◆ Bean flow control via high precision auger
- ◆ 1 or 2 On-Demand ground coffees
- ◆ Precise dosing
- ◆ Push button "Grind" for manual dosing
- ◆ Double fan cooling system
- ◆ Three positions switch with by-pass
- ◆ Universal adjustable height porta filter holder

ELECTRONIC FEATURES

- ◆ Multilanguage Display
- ◆ 3 Modes: Pre-selection - Automatic - Instant
- ◆ Protection menu access by Password
- ◆ Total and Partial shot counter
- ◆ Notice of change of Burrs
- ◆ Digital grind point scale Display
- ◆ Date and time
- ◆ Promotional message configuration
- ◆ Customizable Display message

